



WESTWIND SERVICE CENTER NEWSLETTER

December, 1986

Editor: Ron Lasker

Contributors: Linda DeMarco
Ed Nesbitt

580-53178
206-900

December, 1986

WESTWIND SERVICE CENTER NEWSLETTER

Maintenance personnel may not be aware that the 1123 and 1124 Annunciator Panel modules can be repaired in the field with module subassembly parts. The module breakdown is as follows:

- | | | |
|----|-------------------|----------------------------|
| 1. | P/N 293-15948-000 | Lamp Cap (single display) |
| | P/N 295-15541-001 | Lamp Cap (divided display) |
| 2. | P/N 123-13001-001 | Base Assembly |
| 3. | P/N 293-14869-000 | Diode Module #13 ✓ |
| | P/N 295-14859-000 | Diode Module #8 |
| | P/N 293-14875-000 | Diode Module #15 |
| | P/N 293-14852-000 | Diode Module #6 |

Please take note of the numbers 13, 8, 15, and 6 in the diode modules. These numbers correspond to the applicable modules in the aircraft wiring diagram. The breakdown by diode module number in each 883665 panel is as follows:

- #13 - 29 ea.
- # 8 - 1 ea.
- #15 - 1 ea.
- # 6 - 5 ea.

A replacement **protective cover for the main entrance door positive latch mechanism** on the 1124 is available in Atlantic Aviation stock under part number "1124 Door Lock". This cover is a stainless steel model which replaces Kydex original equipment.

The 1124 lavatory mirrors are available in Atlantic Aviation stock under part number "Mirror-3X3". The mirror is sold as a 9 sq. ft. piece which leaves enough excess for trimming to fit.

On 1124, serial number 391 and subs, Israel Aircraft incorporated an Oxygen Regulator, part number 753544-400 in place of the Puritan Bennett part number 112031-06. The new regulator is manufactured in Israel and is interchangeable with the 112031-06.

Recent calls for exchange part number 653572-501 valves have been followed up later with requests for an MS27401-14 Relay. Investigation reveals that this is not a coincidental situation. In SIL 1124-28-026, IAI recommends that the MS27401-14 relay in

the circuit be replaced at the time of the valve change. Being aware of the information in this SIL could save some shipping charges.

The October Newsletter listed part number 100-28C-31 as the **fuse for Electrotherm galley liquid containers**. Note that we have superseded the part number to part number 4283.

Good information on correct part numbers for **Audio Selector Panel Controls** is outlined in Service Bulletin 1124-23-082. Although this service bulletin is Communications - ATA 23, the part number information contained therein should be pencil corrected in Chapter 39 of the unrevised IPC.

Another service publication helpful to supply and maintenance personnel is **SIL 1124-22-045B**. This SIL describes and provides information on various Deutch relays used on the 1124.

Eros oxygen masks, part number MC10-13-02, rotating in the Atlantic Aviation exchange pool have been earmarked to incorporate a metal disconnect on the hose in place of the plastic type now in use. A timetable for this incorporation has not as yet been established due to shortages of the new disconnect at Scott. It should be noted that this modification requires replacement of the hose.

December's "Be Aware" section concerns the camlock stud fasteners on the 1124 nose avionics access doors. Many operators have been replacing the stud fasteners with a stainless steel type and referencing the part numbers in the IPC when ordering. Refer to 52-40-00 page 5, item 3A and:

1. Change effectivity to read 235-326.
2. Add part number 4002-5 or 4002-5S (stainless) for aircraft 327-999.

The reason for the stud length increase is due to an increase in the seal thickness (item 5B). The "be aware" portion applies to the quantity of 4002-5's required for each door. Our experience shows that there could be some quantity of -6's and even some -7's on the doors. The best thing to do is to note the actual lengths before ordering. The length dash number appears on the stud head.

The following **SO series to NAS and MS o'ring cross reference** is provided below for your information:

<u>SO Series</u>		<u>Alternate</u>	
SO309-001	thru	SO309-475	NAS1611-001 thru NAS1611-475
SO309-902	thru	SO309-932	NAS1612-2 thru NAS1612-32
SO310-020F	thru	SO310-242F	MS29513-020 thru MS29513-242
SO310-110R	thru	SO310-341R	MS28775-110 thru MS28775-341
SO310-904F	thru	SO310-912F	MS29512-04 thru MS29512-12

<u>SO Series</u>		<u>Alternate</u>	
SO310-904R	thru SO310-908R	MS28778-4	thru MS28778-8
SO311-010	thru SO311-341	MS28774-010	thru MS28774-341
SO311-901	thru SO311-916	MS28777-01	thru MS28777-16

This month's **IPC corrections and additions** are as follows:

32-20-00 Figure 3 Items 1 and 10

ED12873-505 should be item 10 and ED12873-503 should be item 1.

32-50-00 Figure 2

Add alternate part numbers as follows:

Item 18: NAS1611-114
Item 20: NAS1611-110
Item 23: NAS1612-6
Item 32: NAS1611-010
Item 33: NAS1611-012
Item 22: 65-2010 (switch only)

57-30-00 Figure 1 Items 64 and 67

Correct existing part numbers to read "01-000-99-01".

32-20-00 Figure 5 Item 45

Change the description column as follows:

ED15004-1 Shim (.002" thickness) alt. 273009-RE35

ED15004-501 .. Shim (.003" thickness) alt. 273009-RE37

NOTE: The part supplied under the above part numbers is .032" thick laminated material. Desired thickness is obtained by peeling the layers as necessary.

Astra 29-10-00 Figure 19 Page 101

Add a requirement for an o'ring as illustrated on the attachment page.

SIL 1124-24-019A

Correct the part number in part B instructions (10) from 6572-13-50 to 6752-13-50.

Raw stock seal is often substituted for proprietary numbers listed in the IPC. An example is the 173528 series wing trailing edge seal. Part number 173609 is the spares replacement (when ordering, specify the length required in feet). To replace all the individual seals on each wing, 10 feet should be ordered.

A seal, often replaced and not shown in the old IPC (the new revision will have it), is the pylon firewall seal, part number DG150-20A. Again, since the installation on each pylon is in sections, specify the length required in feet.

This month's "Advanced information on service publications" section outline two 1124 Service Bulletins:

1124-27-086: Inspection and/or replacement of LH and RH elevator reducer tube collars -

This recommended bulleting includes a 150 hour dye penetrant inspection of the collars and parts replacement information. The parts involved are a part number 533577-1 collar, a part number 533579-501 reducer tube, and attach hardware. Atlantic Aviation Supply Co. is presently supplying this tube and collar as spares replacements for the older installation (see 1124 IPC Chapter 55-50-00 Figure 1, items 5 and 6A). Now might be a good time to edit your IPC as follows:

- Correct item 5 effectivity from 187-999 to 187-330
- Correct item 6A effectivity from 187-999 to 187-330
- Add to item 5 part number 533577-1 effectivity 331-999 (preferred spares)
- Add to item 6A part number 533579-501 effectivity 331-999 (preferred spares)

1124-34-047: Installation of a second unheated static port system for the co-pilot's altimeter on 1124A -

This recommended bulleting will be an extensive modification using many parts including hardware and proprietary items. Due to anticipated long lead times for some items, we suggest Service Center personnel pay particular attention to the availability of the parts before scheduling an operator wishing to accomplish this modification.

IAII Technical Services advises that **there will be an upcoming change** to Chapter 5-20-02, page 201 of the 1124 Maintenance Manual. This change adds a statement to replace the pressurization air filter cartridge (part number 79030) at 600 hour intervals.

Here is this month's list of **total fleet usage items**:

<u>Part Number</u>	<u>Description</u>	<u>Amount</u>
49S08A-49	Switch	9
46S07D-34	Switch	10
811 Batt	Clock Battery	36
17000-102(382)	Motor and Pump	17
31-87	Lamp Holder	113
411SM1	Switch	21

The Newsletter question and answer section for December:

Question: Many parts in Chapter 54 use nacelle serial numbers for effectivity. How do I convert nacelle serial numbers to aircraft serial numbers?

Answer: A good rule of thumb is to apply nacelle serial number A2 to aircraft 187 and A3 to 188 and go from there. This should only be used as a rough calculation as nacelles were swapped around during production. IAI Product Support can provide the actual match information if required.

Question: Why can't I use the MS21250-06-018 flap attach bolt as shown in 1124 IPC 57-40-00 Figure 3, Item 31 in place of the 193502-3 part number?

Answer: You can; however, the MS bolt will come with an undrilled shank and, due to the hardness of the bolt, it is very difficult to drill the shank in the field. The 193502-3 bolt is drilled and available.

Question: What is the difference between the 263019-501 and 263019-503 gear door attach rod assemblies as shown in 32-20-00 page 4?

Answer: The 263019-503 assemblies are left hand threaded at one end and have 5/16" threads at both ends. Although both assemblies are interchangeable, the -503 should be used for retrofit on serial numbers 187-306.

Question: Why is there an IAI number shown in the IPC for the overhead panel rocker switches?

Answer: The IAI number only applies to the engraved cap on the switch. Replacement switches (without the cap) should be ordered under the Micro Switch number. Example: 2TP1-1.

Question: Can I replace the metal elevators (463004) with the 1124 honeycomb type? Is there a weight reduction?

Answer: Yes to both. Commodore Custom Kit No. 2 is your approval and there is a net reduction of 47 lbs.

Question: Can I get a parts breakdown of the water separator on the 1124?

Answer: Yes, see the attached pages.

Question: Is there a loaner or rental load bank test box available anywhere?

Answer: We assume you are referring to the distribution bus circuit breaker and RCB inspection which uses a load bank to perform the checks. I am sure most Service Centers have a load bank box for in-house use, but I can't be certain that they'll loan it out. Atlantic Aviation Supply Co. is having a load bank built at the present time for use on a rental basis and should be available mid December.

EDITOR NOTE: Can we hear from each Service Center, please, on your individual position or program, if any, on loaning or renting load banks to operators?

The last paragraph in the November Newsletter stated that the speed brake down line part number 723589-495 was found to be chafed in some cases. Subsequent inspections have revealed that part number 723552-697 in the 65% Spar area could also be affected (refer to the illustration in the October Newsletter). Both the 723552-495 and 723552-697 lines are presently available in Atlantic Aviation stock.

Recent letters to the Newsletter Editor and Bob Henson from Dennis Hutcherson of Garrett/Augusta, James Saffley of Mid-Coast, and Jane Wilkins of Kal-Aero indicate that our Newsletter content and format is getting good reviews around North America. Although we do appreciate receiving the accolades, we again urge our readers to forward technical related information to the Newsletter. Using the Newsletter as a vehicle for information sharing can be a large benefit to our readers and customers.

A feature you all have been waiting for is introduced this month. You have heard of the first annual Miller Lite trivia contest, now we present the first monthly Jet Commander/Westwind trivia contest. Each month we'll ask you to answer a trivia question and will award prizes for correct answers. Here are the rules:

- A. Respond by the indicated date your answer on a postcard.
- B. One answer per Service Center.
- C. Contest limited to Service Center personnel only - no cheating allowed.

The prizes to be awarded will be announced with the correct answer and winners the following month. A trip for two to Hawaii will not be a prize.

December question: In the movie Rambo II, an 1121 was used by Sly Stallone to parachute into North Vietnam. What was the serial number of this aircraft?

Send your answer to: Ron Lasker
 Newsletter Editor
 Atlantic Aviation Supply Co.
 P. O. Box 15000
 Greater Wilmington Airport
 Wilmington, DE 19850

To be eligible, postcards must be received by December 15, 1986.

The Newsletter staff extends our best wishes for a safe and happy Holiday Season to our readers and their families.

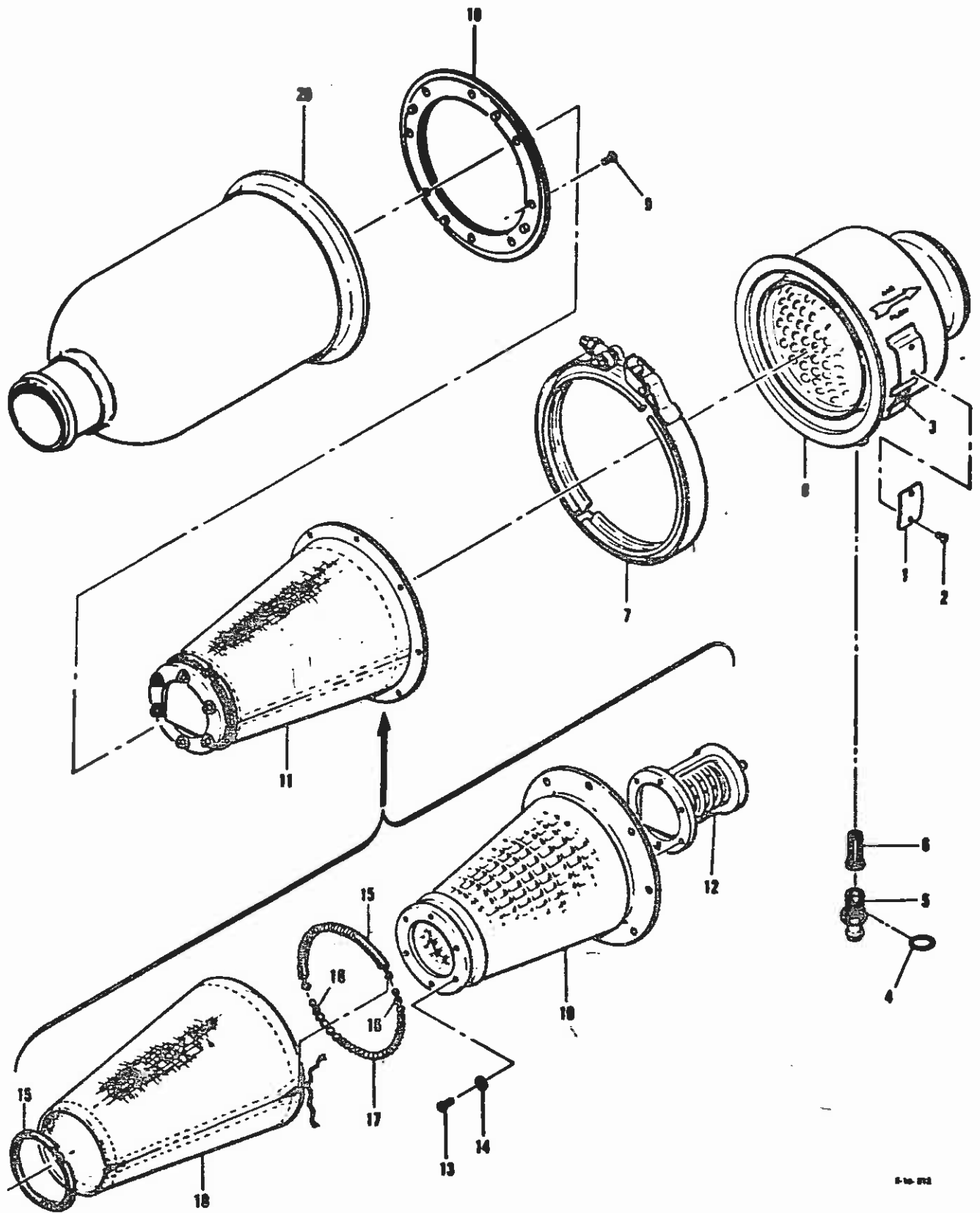


Figure 2. Water Separator

TABLE IV. LIST OF REPLACEABLE PARTS

Fig. and Index No.	Part No.	Description							No. Reqd
		1	2	3	4	5	6	7	
2	179510-1 Series 1	SEPARATOR, WATER (instl outline)							1
	179511	. SEPARATOR ASSEMBLY, WATER							1
-1	S8834B1P	. . PLATE, IDENTIFICATION							1
		(ATTACHING PARTS)							
-2	MS24641-1	. . SCREW							2
		---*---							
-3	S8165-1	. . LABEL, DIRECTION OF GRAVITY							1
-4	S8057BJ9	. . PACKING, O-RING							1
-5	175057	. . PLUG ASSEMBLY, WATER SEPARATOR DRAIN ..							1
-6	175058	. . STRAINER ASSEMBLY, WATER SEPARATOR							1
		DRAIN							
-7	4365-732S	. . COUPLING, TWO-SEGMENT QUICK-COUPLER ...							1
		GROOVED CLAMP (Aeroquip Corp. Marman Div, Los Angeles, California)							
	N4203S1-732S	. . COUPLING, TWO-SEGMENT QUICK-COUPLER ...							Ref
		GROOVED CLAMP (National Utilities Corp, Monrovia, California) (alternate part)							
-8	179513	. . DUCT ASSEMBLY, WATER SEPARATOR OUTLET .							1
-9	AN507-832-7	. . SCREW							8
-10	172587	. . GASKET ASSEMBLY, WATER SEPARATOR							1
-11	172143-1	. . CONDENSER ASSEMBLY, WATER SEPARATOR ...							1
-12	171019-5	. . VALVE ASSEMBLY, WATER SEPARATOR							1
		BY-PASS (ATTACHING PARTS)							
-13	AN503-8-4	. . . SCREW							6
-14	AN960-8L	. . . WASHER							6
		---*---							
-15	83248	. . . SPRING, EXTENSION							2
	83463-9	. . . CHAIN ASSEMBLY, WATER SEPARATOR							1
-16	10A	. . . FASTENER (The Bead Chain Mfg Co., Bridgeport, Connecticut)							2
-17	10	. . . CHAIN, 5.17 in. lg (The Bead							1
		Chain Mfg Co, Bridgeport, Connecticut)							
-18	83237-12	. . . CONDENSER, WATER SEPARATOR CONICAL .							1
-19	172132	. . . SUPPORT ASSEMBLY, WATER SEPARATOR ..							1
		CONDENSER							
-20	179512	. . SHELL ASSEMBLY, WATER SEPARATOR INLET .							1

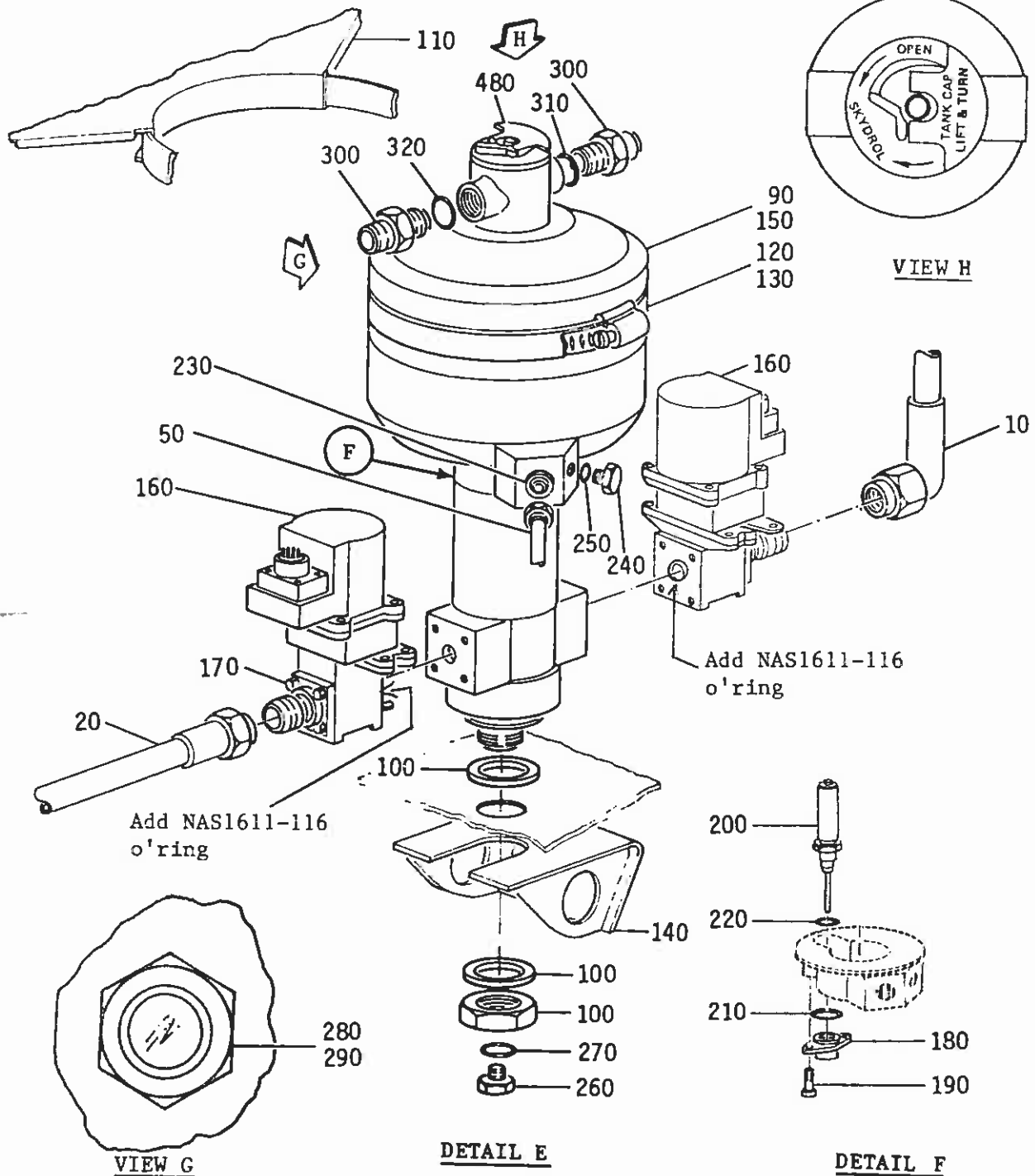


FIGURE 19 . HYDRAULIC LINE AND MAIN RESERVOIR INSTALLATION
(PAGE 3 OF 3)